

Metal one-touch fittings



Ordering code

NPT Thread

NBPC 1/4 - 1/8

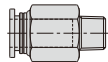
1

2

3

① Model

NBPC: Metal male connector



NBPCF: Metal female connector



NBPMF: Metal bulkhead female connector



NBPCF: Metal female connector

② Port size

5/32: $\Phi 5/32$ "
 1/4: $\Phi 1/4$ "
 5/16: $\Phi 5/16$ "
 3/8: $\Phi 3/8$ "
 1/2: $\Phi 1/2$ "

③ Thread connection

U10: #10-32UNF
 1/8: NPT1/8
 1/4: NPT1/4
 3/8: NPT3/8
 1/2: NPT1/2

PT Thread

BPC 6 01

1

2

3

① Model

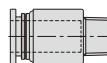
BPC: Metal male connector



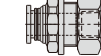
BPCF: Metal female connector



BPOC: Hexagon socket head metal male connector



BPMF: Metal bulkhead female connector



② Port size

4: $\Phi 4$ mm
 6: $\Phi 6$ mm
 8: $\Phi 8$ mm
 10: $\Phi 10$ mm
 12: $\Phi 12$ mm

③ Thread connection

M5: M5X0.8
 01: PT1/8
 02: PT1/4
 03: PT3/8
 04: PT1/2

NPT Thread

NBPM 1/4

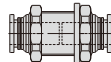
1

2



① Model

NBPM: Metal bulkhead connector



② Port size

5/32: $\Phi 5/32$ "
 1/4: $\Phi 1/4$ "
 5/16: $\Phi 5/16$ "
 3/8: $\Phi 3/8$ "
 1/2: $\Phi 1/2$ "

PT Thread

BPM 6

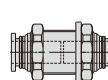
1

2



① Model

BPM: Metal bulkhead connector



② Port size

4: $\Phi 4$ mm
 6: $\Phi 6$ mm
 8: $\Phi 8$ mm
 10: $\Phi 10$ mm
 12: $\Phi 12$ mm

Accessories—One-Touch Fittings

Metal one-touch fittings

Specification

Operating pressure range	0~145psi(0~1.0MPa)
Negative pressure	10Torr(-750mmHg)
Proof pressure	215psi(1.5MPa)
Ambient and fluid temperature	32~302°F (0~150°C)
Applicable tubing	Soft nylon or polyurethane

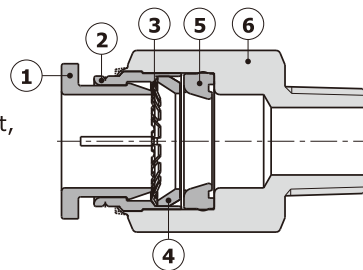
Note: The temperature resistance level of the tubing should be confirmed first when used in high temperature environments.

Product feature

- High flow capacity; The flow rate of these fittings is equivalent to that of the adaptable tubings.
- Inserting or removal tubing is simple and convenient, and the connecting portion is reliable and durable.
- Sealant is coated on threaded portion.
The M5, #10-32UNF metric thread are attached with a sealing gasket, to ensure no leakage of the threaded connection part.
- The fitting metal body adopts a special nickel-plating process, which has good corrosion resistance.
- Metal fittings can be used in high temperature environment.

Inner structure

NBPC, BPC Series



NO.	Name
1	Metal connector
2	Locating ring
3	Spring gasket
4	Locating seat
5	Special shape O-ring
6	Straight connector body

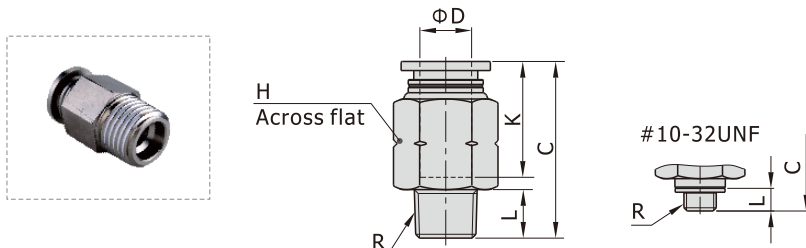
Table for interface port and tube O.D.

Product series	Thread type	Port size					Product series	Thread type	Port size				
		Φ5/32"	Φ1/4"	Φ5/16"	Φ3/8"	Φ1/2"			Φ4	Φ6	Φ8	Φ10	Φ12
NBPC	#10-32UNF	●	●				BPC	M5	●	●			
	NPT1/8	●	●	●	●			PT1/8	●	●	●	●	
	NPT1/4		●	●	●	●		PT1/4	●	●	●	●	●
	NPT3/8		●	●	●	●		PT3/8		●	●	●	●
	NPT1/2				●	●		PT1/2				●	●
NBPCF	#10-32UNF	●	●				BPOC BPCF	M5	●	●			
	NPT1/8	●	●	●				PT1/8	●	●	●		
	NPT1/4		●	●	●			PT1/4		●	●	●	
	NPT3/8				●	●		PT3/8				●	●
	NPT1/2					●		PT1/2					●
NBPMF	NPT1/8	●	●	●			BPMF	M5					
	NPT1/4		●	●	●			PT1/8	●	●	●		
	NPT3/8				●	●		PT1/4		●	●	●	
	NPT1/2					●		PT3/8				●	●
						●		PT1/2					●
Product series	Port size					Product series	Port size						
	Φ5/32"	Φ1/4"	Φ5/16"	Φ3/8"	Φ1/2"		Φ4	Φ6	Φ8	Φ10	Φ12		
NBPM	●	●	●	●	●	BPM	●	●	●	●	●		

Metal one-touch fittings

Dimensions

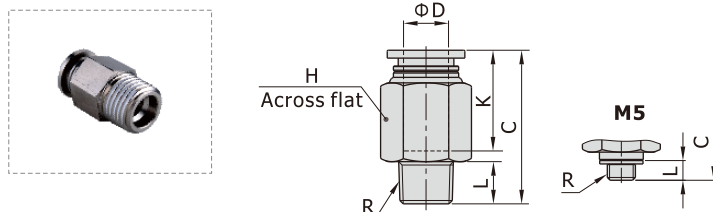
NBPC Series



[Unit: inch]

Model\Item	ΦD	R	L	C	K	H	Weight(g)
NBPC5/32-U10	5/32	#10-32UNF	0.14	0.74	0.52	5/16	5.5
NBPC5/32-1/8		NPT1/8	0.30	0.74	0.52	7/16	9.0
NBPC1/4-U10	1/4	#10-32UNF	0.14	0.87	0.63	1/2	11.6
NBPC1/4-1/8		NPT1/8	0.30	0.85	0.71	1/2	15.3
NBPC1/4-1/4		NPT1/4	0.39	0.95	0.71	9/16	19.6
NBPC1/4-3/8		NPT3/8	0.43	0.87	0.71	11/16	27.5
NBPC5/16-1/8	5/16	NPT1/8	0.30	1.08	0.70	9/16	16.9
NBPC5/16-1/4		NPT1/4	0.39	1.04	0.70	9/16	16.6
NBPC5/16-3/8		NPT3/8	0.43	0.90	0.70	11/16	26.1
NBPC3/8-1/8	3/8	NPT1/8	0.30	1.15	0.80	11/16	26.4
NBPC3/8-1/4		NPT1/4	0.39	1.25	0.80	11/16	29.9
NBPC3/8-3/8		NPT3/8	0.43	1.07	0.80	11/16	35.5
NBPC3/8-1/2		NPT1/2	0.55	1.02	0.80	7/8	41.8
NBPC1/2-1/4	1/2	NPT1/4	0.39	1.35	0.88	7/8	51.9
NBPC1/2-3/8		NPT3/8	0.43	1.17	0.88	7/8	39.5
NBPC1/2-1/2		NPT1/2	0.55	1.25	0.88	7/8	51.9

BPC Series

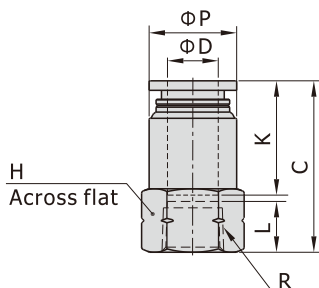


[Unit: mm]

Model\Item	ΦD	R	L	C	K	H	Weight(g)
BPC4M5	4	M5X0.8	3.5	19.5	14	9	5.5
BPC401		PT1/8	7.5	19.5	14	10	7.9
BPC402		PT1/4	10	19	14	14	8.7
BPC6M5	6	M5X0.8	3.5	22	16	12	10.1
BPC601		PT1/8	7.5	21.5	18	12	14.2
BPC602		PT1/4	10	24	18	14	19.1
BPC603		PT3/8	11	22.5	18	17	26.8
BPC801	8	PT1/8	7.5	27.5	18	14	16.1
BPC802		PT1/4	10	26.5	18	14	16
BPC803		PT3/8	11	23	18	17	25.4
BPC1001	10	PT1/8	7.5	29.5	20.5	17	24.5
BPC1002		PT1/4	10	32	20.5	17	28
BPC1003		PT3/8	11	27.5	20.5	17	34.6
BPC1004		PT1/2	14	25.5	20.5	21	39.3
BPC1202	12	PT1/4	10	34.5	22	21	44.5
BPC1203		PT3/8	11	30	22	21	34.2
BPC1204		PT1/2	14	32	22	21	47

Metal one-touch fittings

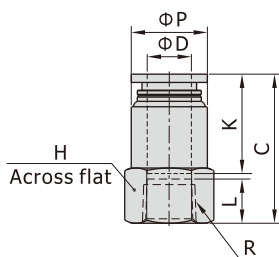
NBPCF Series



[Unit: inch]

Model\Item	ΦD	R	ΦP	L	C	K	H	Weight(g)
NBPCF5/32-U10	5/32	#10-32UNF	0.35	0.20	0.80	0.52	3/8	3.3
NBPCF5/32-1/8		NPT1/8	0.37	0.31	0.87	0.52	9/16	5.5
NBPCF1/4-U10	1/4	#10-32UNF	0.47	0.20	0.83	0.63	1/2	5.9
NBPCF1/4-1/8		NPT1/8	0.49	0.31	0.99	0.63	9/16	7.4
NBPCF1/4-1/4		NPT1/4	0.49	0.43	1.11	0.63	11/16	9.7
NBPCF5/16-1/8	5/16	NPT1/8	0.55	0.31	1.06	0.70	9/16	7.3
NBPCF5/16-1/4		NPT1/4	0.57	0.43	1.18	0.70	11/16	11.1
NBPCF3/8-1/4	3/8	NPT1/4	0.67	0.43	1.27	0.80	11/16	14.0
NBPCF3/8-3/8		NPT3/8	0.71	0.47	1.31	0.80	7/8	19.2
NBPCF1/2-3/8	1/2	NPT3/8	0.83	0.47	1.29	0.88	7/8	23.7
NBPCF1/2-1/2		NPT1/2	0.83	0.53	1.43	0.88	1	25.6

BPCF Series



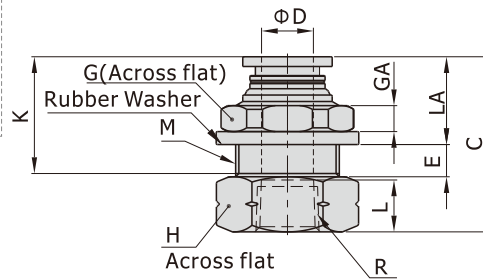
[Unit: mm]

Model\Item	ΦD	R	ΦP	L	C	K	H	Weight(g)
BPCF4M5	4	M5X0.8	9	5	21	14	10	3.5
BPCF401		PT1/8	9.5	8	23	14	14	5.3
BPCF6M5	6	M5X0.8	12	5	21	16	12	5.6
BPCF601		PT1/8	12.5	8	25	16	14	7.2
BPCF602	8	PT1/4	12.5	11	28	16	17	9.2
BPCF801		PT1/8	14	8	27	18	14	7.1
BPCF802	10	PT1/4	14.5	11	30	18	17	10.6
BPCF1002		PT1/4	17	11	32.5	20.5	17	13.5
BPCF1003	12	PT3/8	18	12	33.5	20.5	21	17.5
BPCF1203		PT3/8	21	12	35	22	21	22
BPCF1204	12	PT1/2	21	13.5	36.5	22	25	24.9

Accessories—One-Touch Fittings

Metal one-touch fittings

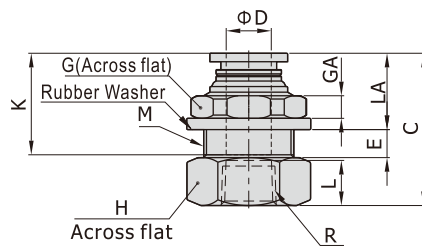
NBPMF Series



[Unit: inch]

Model\Item	ΦD	R	M	L	C	K	LA	E	GA	G	H	Weight(g)
NBPMF5/32-1/8	5/32	NPT1/8	1/2-20UNF	0.31	0.95	0.52	0.47	0.16	0.16	9/16	9/16	7.8
NBPMF1/4-1/8	1/4	NPT1/8	9/16-18UNF	0.31	0.95	0.63	0.47	0.20	0.16	11/16	11/16	10.7
NBPMF1/4-1/4		NPT1/4	9/16-18UNF	0.43	1.19	0.63	0.47	0.20	0.16	11/16	11/16	12.7
NBPMF5/16-1/8	5/16	NPT1/8	5/8-18UNF	0.31	1.06	0.70	0.51	0.22	0.16	3/4	3/4	13.9
NBPMF5/16-1/4		NPT1/4	5/8-18UNF	0.43	1.24	0.70	0.51	0.22	0.16	3/4	3/4	15.3
NBPMF3/8-1/4	3/8	NPT1/4	7/8-14UNF	0.43	1.35	0.80	0.55	0.30	0.20	1	1	31.1
NBPMF3/8-3/8		NPT3/8	7/8-14UNF	0.47	1.39	0.80	0.55	0.30	0.20	1	1	29.7
NBPMF1/2-3/8	1/2	NPT3/8	7/8-14UNF	0.47	1.45	0.88	0.59	0.31	0.24	1	1	34.9
NBPMF1/2-1/2		NPT1/2	7/8-14UNF	0.53	1.51	0.88	0.59	0.31	0.24	1	1	32.5

BPMF Series

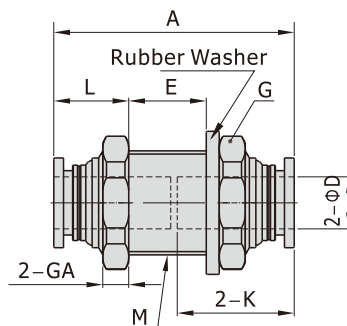


[Unit: mm]

Model\Item	ΦD	R	M	L	C	K	LA	E	GA	G	H	Weight(g)
BPMF401	4	PT1/8	M12X1	8	25	14	12	4	4	14	14	7.6
BPMF601	6	PT1/8	M14X1	8	25	16	12	5	4	17	17	10.4
BPMF602		PT1/4	M14X1	11	30	16	12	5	4	17	17	12.2
BPMF801	8	PT1/8	M16X1	8	27	18	13	5.5	4	19	19	13.9
BPMF802		PT1/4	M16X1	11	31.5	18	13	5.5	4	19	19	15.3
BPMF1002	10	PT1/4	M20X1	11	34.5	20.5	14	7.5	5	24	22	26.2
BPMF1003		PT3/8	M20X1	12	35.5	20.5	14	7.5	5	24	22	24.4
BPMF1203	12	PT3/8	M22X1	12	37	22	15	8	6	27	24	32.6
BPMF1204		PT1/2	M22X1	13.5	38.5	22	15	8	6	27	25	31.8

Metal one-touch fittings

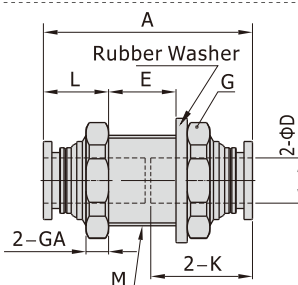
NBPM Series



[Unit: inch]

Model\Item	φD	M	A	K	L	E	GA	G	Weight(g)
NBPM5/32	5/32	1/2-20UNF	1.12	0.55	0.39	0.28	0.16	9/16	6.4
NBPM1/4	1/4	9/16-18UNF	1.28	0.61	0.39	0.43	0.16	11/16	16.4
NBPM5/16	5/16	5/8-18UNF	1.43	0.69	0.43	0.51	0.16	3/4	15.8
NBPM3/8	3/8	7/8-14UNF	1.61	0.78	0.47	0.63	0.20	1	28.9
NBPM1/2	1/2	7/8-14UNF	1.74	0.84	0.51	0.69	0.24	1	40.3

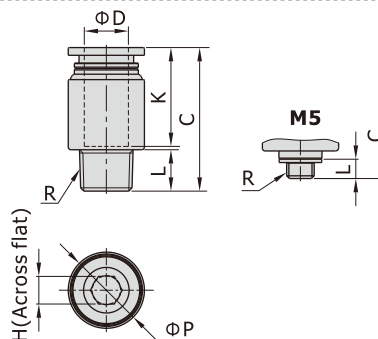
BPM Series



[Unit: mm]

Model\Item	φD	M	A	K	L	E	G(Across flat)	GA	Weight(g)
BPM4	4	M12X1	28.5	14	10	7	14	4	6.4
BPM6	6	M14X1	33	16	10	11	17	4	16.4
BPM8	8	M16X1	37	18	11	13	19	4	15.8
BPM10	10	M20X1	41.5	20.5	12	16	24	5	28.9
BPM12	12	M22X1	45	22	13	17.5	27	6	40.3

BPOC Series



[Unit: mm]

Model\Item	φD	R	φP	L	C	K	H	Weight(g)
BPOC4M5	4	M5X0.8	9	3.5	18.5	14	2	4.4
BPOC401		PT1/8	10	7.5	17.5	14	2.5	6.6
BPOC6M5	6	M5X0.8	12	3.5	21	16	2	7.1
BPOC601		PT1/8	12	7.5	21.5	18	4	8.4
BPOC602	8	PT1/4	14	10	21.5	18	4	13.6
BPOC801		PT1/8	14	7.5	26	17.5	5	12.3
BPOC802	10	PT1/4	14	10	24.5	17.5	6	12.7
BPOC1002		PT1/4	17	10	28.5	20.5	6	18.5
BPOC1003	12	PT3/8	17	11	27.5	20.5	8	24.9
BPOC1203		PT3/8	21	11	29.5	22	8	30.4
BPOC1204		PT1/2	21	14	31.5	22	8	42.4